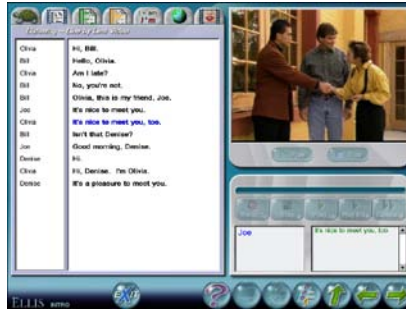


## ELLIS Academic Suite 3.3



The **ELLIS Academic Suite 3.3** is a combination of computer-based ESL/EFL modules that teach core communication skills for non-English speakers. The suite begins at the early beginner level and goes to the more advanced proficiency levels. The ELLIS Academic Suite includes these programs: 1) Basics 2) Intro, 3) Middle Mastery, 4) Senior Mastery, 5) Master Pronunciation, and 6) Placement. In addition, record keeping and tracking functions we call Instructor Utilities are incorporated in all levels of the program. A companion student workbook supplements the computer instruction by providing practice opportunities. A comprehensive Instructor Guide also comes with the program.

**ELLIS Basics** – ELLIS Basics is a computer-based program that provides instruction in literacy and vocabulary skills that serve as a foundation for communication in English. Basics is for true beginners, older learners with no experience in English, or learners who are not literate. It focuses on survival vocabulary, alphabet, and beginning literacy skills. The instruction uses video, audio, voice-recording, animation, and native language guidance.

**ELLIS Intro** – ELLIS Intro is a computer-based ESL/EFL program that teaches core English survival and communication skills. ELLIS Intro is for beginners who have some literacy skills and minimal exposure to English. ELLIS Intro has 35 lessons, each with video to model realistic situations, recording of the learner's voice, quizzes and instruction in vocabulary, grammar, listening, pronunciation and culture. Intro also has games, tests and an interactive picture dictionary.

**ELLIS Middle Mastery** – ELLIS Middle Mastery is a computer-based ESL program that teaches intermediate-level English communication skills. Middle Mastery is for intermediate level students. Middle Mastery has 20 lessons, each with video to model English usage, voice recording, quizzes and instruction in vocabulary, listening, pronunciation, and culture. Middle Mastery also has games, tests, and grammar instruction, which include interactive tutorials and a grammar reference.

**ELLIS Senior Mastery** – ELLIS Senior Mastery is a computer-based ESL program that teaches advanced level English communication skills. Senior Mastery is for intermediate to advanced level students in English proficiency. Senior Mastery has 30 lessons, each

with video to model English usage, allows for the recording of the learner's voice, quizzes and instruction in vocabulary, listening, pronunciation, and culture. Senior Mastery also has games, tests, and thorough grammar instruction.

**Master Pronunciation** –Master Pronunciation is a computer-based ESL program that focuses on accent reduction and pronunciation. The open-ended instruction allows students at any level to adapt Master Pronunciation for individual needs. Activities include specific practice in phonemic recognition and production, listening discrimination, using tongue twisters and speech acts.

**Placement** – Placement is a computerized-adaptive test designed to place students in the ELLIS suite. The computer-adaptive nature means that the test modifies questions to match the proficiency of the student. A rank in Placement is intended as a general suggestion for working within ELLIS. The assessment is grouped into three skill areas: vocabulary, listening, and grammar.

**Instructor Utilities** – Instructor Utilities is the learner management system for instructors and program administrators. This program tracks students' progress and scores. Details show where students spend their time, which activities, lesson and units have been worked on, and what the test scores are.

**Deployment: LAN – Network version.**

Available for implementation in individual machines and network environments. Refer to the system requirements for more information.

**\*ELLIS ACADEMIC 5.X is the web-version of the Academic 3.3 product. For more information on this version, please consult Pearson Digital Curriculum Group U.S.**

**Supplemental Items for ELLIS Academic 3.3**

The following items are available as supplements to the ELLIS Academic 3.3 Suite.

- Student workbook
- Instructor guide
- Supplemental Materials:
  - Pre-translated parent letters
  - Certificates of completion
  - Help-at-a-glance cards

**ELLIS Student Workbooks**

ELLIS Student Workbooks are full of activities that build on the computer instruction. In the workbooks, the student writes, reads, uses diagrams, and participates in activities with other students. The lesson-by-lesson design always builds on what has been learned and practiced in the computer program. This gives the students additional practice and can be used as take-home assignments. They are available for:

- ELLIS Basics

- ELLIS Intro
- ELLIS Middle Mastery
- ELLIS Senior Mastery

## **Instructor Guide**

The Instructor Guide has several functions. There is a comprehensive introduction for using the ELLIS computer programs, detailed screen shots and training instructions on using the specific ELLIS programs, instructions on using and interpreting the reports in Instructor Utilities, scripts from the lesson videos, and answers to the student workbooks.

## **Parent Letter Templates**

Parent letter templates are found in the Instructor Utilities: (Forms and Documents) section and in the Teachers Corner of ellis.com. These letters range in purpose from introduction letters when students begin using ELLIS to progress reports that give parents a general idea of how the student is performing. These letters are translated into various native languages to help you communicate with the students' parents. You can print out these letters in a variety of different languages free of charge from the ELLIS website.

## **Certificates of Completion**

Certificates of Completion are found in the Instructor Utilities: (Forms and Documents) section and in the Teachers Corner of ellis.com. ELLIS also provides certificates of completion which can be downloaded free of charge and printed off to give to your students when a lesson, theme, or level has been finished. The certificates can be presented at frequent intervals to help the student feel a sense of progress and motivation.

## **Student Help at a Glance Cards**

Help-at-a-glance-cards are found in the Instructor Utilities: (Forms and documents) section. Help-at-a-glance-card is a document (2 pages) for each native language. They can be printed off in each student's native language and kept next to the computer. Help at a glance cards help remind students of the layout and icons in ELLIS.